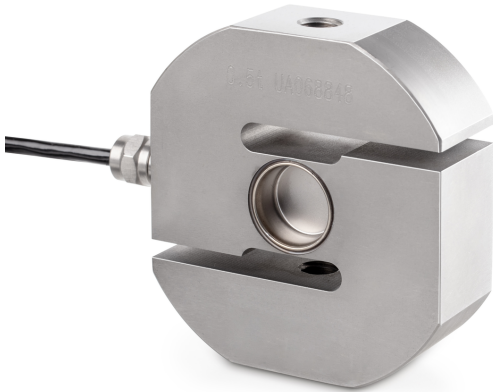


KERN CS 500-3P2

KERN

"S"-Load/force measuring cell made from stainless steel



Construction

| | |
|------------------------------|-------------------|
| Design | "S" shaped cell |
| Dimension (W×D×H) | 92×86×50 mm |
| Material | stainless steel |
| Cable length | 6 m |
| Mounting - force application | Threaded hole M12 |
| Mounting - force dissipation | Threaded hole M12 |

Functions

| | |
|---------------------------------|------|
| IP protection - complete device | IP68 |
|---------------------------------|------|

Environmental conditions

| | |
|---------------------------|--------|
| Use temperature [Min] | -10 °C |
| Use temperature [Max] | 40 °C |
| Ambient temperature [Min] | -35 °C |
| Ambient temperature [Max] | 65 °C |
| Storage temperature [Min] | -40 °C |
| Storage temperature [Max] | 70 °C |

Packing & Shipping

| | |
|------------------------------|----------------|
| Readability force [d] (N) | 1 d |
| Dimensions packaging (W×D×H) | 205×170×60 mm |
| Net weight | 1,36 kg |
| Shipping method | Parcel service |
| Net weight approx. | 1,4 kg |
| Gross weight approx. | 1,6 kg |
| Shipping weight | 1,46 kg |

Services (optional)

| | |
|---|----------|
| Article number for DAkkS calibration (tensile force) | 963-163V |
| Article number for DAkkS calibration (compressive force) | 963-263V |
| Article number for DAkkS calibration (tensile force/ compressive force) | 963-363V |

Category

| | |
|------------------|---------------------------|
| Brand | Sauter |
| Product category | Measuring cell |
| Product group | Load/force measuring cell |
| Product family | CS P2 |

Measuring System

| | |
|--|------------------------|
| Weighing capacity [Max] | 500 kg |
| Load cell connection | 4-wire |
| Load cell OIML class | C3 |
| Load cell - Resolution (verifiable) | 3000 e |
| Load cell - characteristic value - nominal | 2 mV/V |
| Load cell - Y-value | 12000 |
| Load cell - Combined error | 0,023% |
| Load cell - Dead load [Min] (%) | 0% |
| Measuring applications | force mass |
| Load cell - Input resistance - nominal | 350 Ω |
| Load cell - Output resistance - nominal | 355 Ω |
| Load cell - Isolation resistance - [Min] | 5000 MΩ |
| Measuring range force [Max] (N) | 5 kN |
| Directions of force | tension compression |

Approval

| | |
|---------|---|
| CE mark | ✓ |
|---------|---|

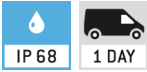
KERN CS 500-3P2



"S"-Load/force measuring cell made from stainless steel

Pictograms

STANDARD



OPTION

